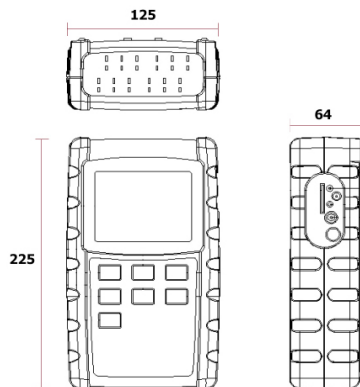


TEMPERATURE DATA LOGGER PCE-T 1200

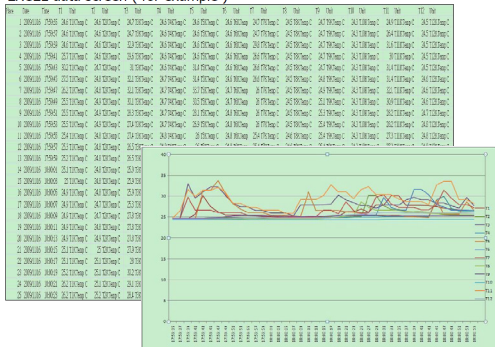


Drawing



Exporting file

EXCEL data screen (for example)



www.omi.co.th

Omega Measuring Instrument Co., Ltd.
 Tel : 02-105-4676
 Fax : 02-903-0080 ext. 6867
 Email : info@omi.co.th
 Line : @omith

Features

- 12 channels thermocouple input
- Supports 6 types of thermocouple K,J,E,T,R and S
- Large LCD Display which can display data from 8 channels simultaneously.
- Switchable °C or °F
- Able to freeze display reading and also recall maximum and minimum value.
- Desktop and wall-mounted.
- Monitor temperature in factories, laboratories, storage house, refrigerators.

Technical Data

Number of measurement inputs : 12 thermocouple inputs
Display range : -100...+1700°C (Depending on the type of sensor)
Thermocouple type : } according to table below
Resolution : }
Accuracy : }
Units of measurement : °C, °F
Display : 82 x 61 mm. LCD screen with green color backlight
Operating temperature : 0...50°C
Operating humidity : 0...85 %RH
Logging interval : 1...3600s
Memory capacity : SD card 2 GB
Battery type : 8 x 1.5 AA batteries
Data file : excel, graph
Dimension : 225 x 125 x 64 mm
Weight : 827 g

Table of Thermocouple type

Sensor Type	Resolution	Temperature range (°C)	Accuracy
Type K	0.1°C	-100...-50.1	± (0.4 % + 1 °C)
	1°C	-50...+999.9	± (0.4 % + 0.5 °C)
		+1000...+1300	± (0.4 % + 1 °C)
Type J	0.1°C	-100...-50.1	± (0.4 % + 1 °C)
	1°C	-50...+999.9	± (0.4 % + 0.5 °C)
		+1000...+1150	± (0.4 % + 1 °C)
Type T	0.1°C	-100...-50.1	± (0.4 % + 1 °C)
	1°C	-50...+400	± (0.4 % + 0.5 °C)
		-100...-50.1	± (0.4 % + 1 °C)
Type E	0.1°C	-50...+900	± (0.4 % + 0.5 °C)
		-50...+50.1	± (0.4 % + 1 °C)
Type R	1°C	0...1700	± (0.5 % + 3 °C)
Type S	1°C	0...1500	± (0.5 % + 3 °C)

